

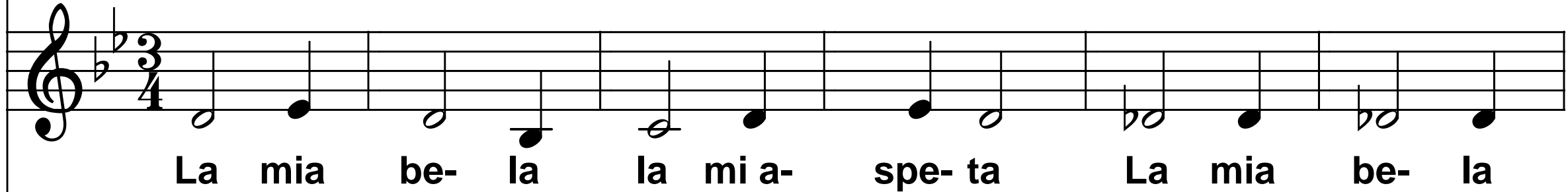
Soprano



La mia be- la la mi a- spe- ta La mia be- la

The Soprano part is written on a treble clef staff in 3/4 time with a key signature of two flats. The melody consists of quarter notes: G4, A4, G4, F4, E4, D4, C4, B3, A3, G3, F3, E3, D3, C3, B2, A2, G2.

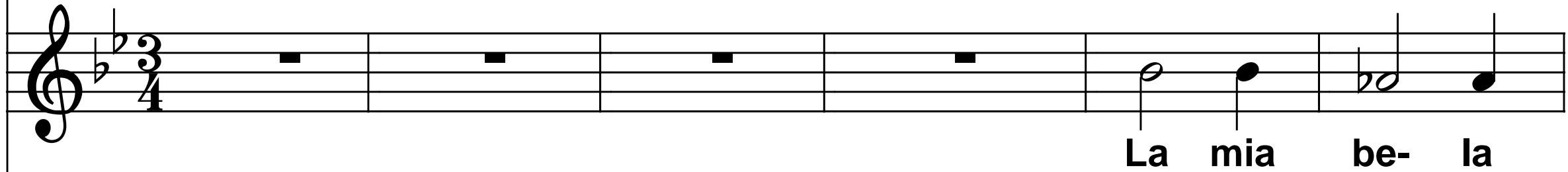
Alto



La mia be- la la mi a- spe- ta La mia be- la

The Alto part is written on a treble clef staff in 3/4 time with a key signature of two flats. The melody consists of quarter notes: G4, A4, G4, F4, E4, D4, C4, B3, A3, G3, F3, E3, D3, C3, B2, A2, G2.

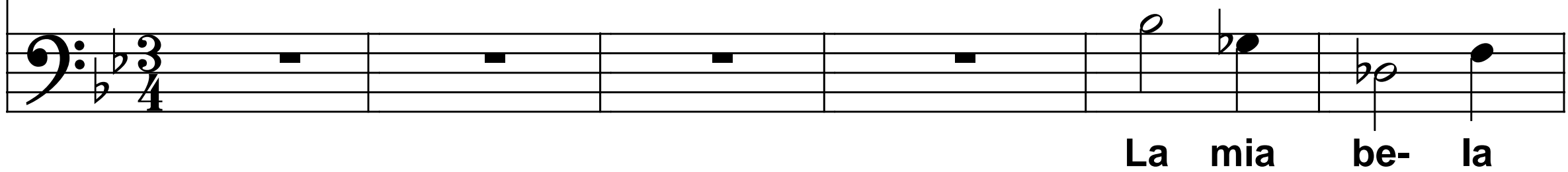
Tenor



La mia be- la

The Tenor part is written on a treble clef staff in 3/4 time with a key signature of two flats. It features four measures of whole rests followed by a melody of quarter notes: G3, F3, E3, D3, C3, B2, A2, G2.

Bass



La mia be- la

The Bass part is written on a bass clef staff in 3/4 time with a key signature of two flats. It features four measures of whole rests followed by a melody of quarter notes: G2, F2, E2, D2, C2, B1, A1, G1.

Soprano

7

la mi a- spe- ta Ma io de- vo- an- da- re a la

Alto

la mi a- spe- ta Ma io de- vo- an- da- re a la

Tenor

la mi a- spe- ta Ma io de- vo- an- da- re a la

Bass

la mi a- spe- ta Ma io de- vo- an- da- re a la

Soprano



gue- ra chi sa quan-do che tor- ne- rò ma io

Alto



gue- ra chi sa quan-do che tor- ne- rò ma io

Tenor



gue- ra chi sa quan-do che tor- ne- rò ma io

Bass



gue- ra chi sa quan-do che tor- ne- rò ma io

19

**Soprano**

de- vo- an- da- re a la gue- ra chi sa quan- do che

**Alto**

de- vo- an- da- re a la gue- ra chi sa quan- do che

**Tenor**

de- vo- an- da- re a la gue- ra chi sa quan- do che

**Bass**

de- vo- an- da- re a la gue- ra chi sa quan- do che

Detailed description: This image shows a four-part vocal score for Soprano, Alto, Tenor, and Bass voices. The music is in a key with two flats (B-flat and E-flat) and a common time signature. The lyrics are: "de- vo- an- da- re a la gue- ra chi sa quan- do che". The Soprano part starts on a high note and descends. The Alto part starts on a middle note and descends. The Tenor part starts on a middle note and descends. The Bass part starts on a low note and descends. The lyrics are written below each staff, with hyphens indicating syllables across notes.

24

Soprano

tor- ne- rò.\ L'ò ar- da- da a la fi- ne- stra

Alto

tor- ne- rò.\ L'ò ar- da- da a la fi- ne- stra

Tenor

tor- ne- rò.\

Bass

tor- ne- rò.\

31

Soprano

L'ò ar- da- da a la fi- ne- stra Ma io

Alto

L'ò ar- da- da a la fi- ne- stra Ma io

Tenor

L'ò ar- da- da a la fi- ne- stra Ma io

Bass

L'ò ar- da- da a la fi- ne- stra Ma io

37

Soprano

de- vo- an- da- re a la gue- ra la mia be- la a-

Alto

de- vo- an- da- re a la gue- ra la mia be- la a-

Tenor

de- vo- an- da- re a la gue- ra la mia be- la a-

Bass

de- vo- an- da- re a la gue- ra la mia be- la a-

Soprano

spet- te- rà ma io de- vo- an- da- re a la gue- ra

Alto

spet- te- rà ma io de- vo- an- da- re a la gue- ra

Tenor

spet- te- rà ma io de- vo- an- da- re a la gue- ra

Bass

spet- te- rà ma io de- vo- an- da- re a la gue- ra



48

Soprano

la mia be-la a- spet-te- rà\ Il ne- mi-co è

Alto

la mia be-la a- spet-te- rà\ Il ne- mi-co è

Tenor

la mia be-la a- spet-te- rà\

Bass

la mia be-la a- spet-te- rà\

Soprano

là in ve- det- ta: Il ne- mi- co è là in ve- det- ta:

Alto

là in ve- det- ta: Il ne- mi- co è là in ve- det- ta:

Tenor

Il ne- mi- co è là in ve- det- ta:

Bass

Il ne- mi- co è là in ve- det- ta:

Soprano

o mon- ta- gne tu- te be- le

Alto

o mon- ta- gne tu- te be- le

Tenor

o mon- ta- gne tu- te be- le

Bass

o mon- ta- gne tu- te be- le

Soprano

67

Val- ca- mo-ni- ca del mio cuor o mon- ta- gne

Detailed description: This block contains the musical notation for the Soprano voice part, measures 67 through 74. The notation is on a single treble clef staff with a key signature of two flats (B-flat and E-flat). The melody consists of quarter and eighth notes. The lyrics are: Val- ca- mo-ni- ca del mio cuor o mon- ta- gne.

Alto

Val- ca- mo-ni- ca del mio cuor o mon- ta- gne

Detailed description: This block contains the musical notation for the Alto voice part, measures 67 through 74. The notation is on a single treble clef staff with a key signature of two flats. The melody consists of quarter and eighth notes. The lyrics are: Val- ca- mo-ni- ca del mio cuor o mon- ta- gne.

Tenor

Val- ca- mo-ni- ca del mio cuor o mon- ta- gne

Detailed description: This block contains the musical notation for the Tenor voice part, measures 67 through 74. The notation is on a single treble clef staff with a key signature of two flats. The melody consists of quarter and eighth notes. The lyrics are: Val- ca- mo-ni- ca del mio cuor o mon- ta- gne.

Bass

Val- ca- mo-ni- ca del mio cuor o mon- ta- gne

Detailed description: This block contains the musical notation for the Bass voice part, measures 67 through 74. The notation is on a single bass clef staff with a key signature of two flats. The melody consists of quarter and eighth notes. The lyrics are: Val- ca- mo-ni- ca del mio cuor o mon- ta- gne.

Soprano

73

Musical staff for Soprano voice part. The staff is in treble clef with a key signature of two flats (B-flat and E-flat). The melody consists of quarter and eighth notes. The lyrics are: tu- te be- le Val- ca- mo-ni- ca del mio cuor\

tu- te be- le Val- ca- mo-ni- ca del mio cuor\

Alto

Musical staff for Alto voice part. The staff is in treble clef with a key signature of two flats. The melody consists of quarter and eighth notes. The lyrics are: tu- te be- le Val- ca- mo-ni- ca del mio cuor\

tu- te be- le Val- ca- mo-ni- ca del mio cuor\

Tenor

Musical staff for Tenor voice part. The staff is in treble clef with a key signature of two flats. The melody consists of quarter and eighth notes. The lyrics are: tu- te be- le Val- ca- mo-ni- ca del mio cuor\

tu- te be- le Val- ca- mo-ni- ca del mio cuor\

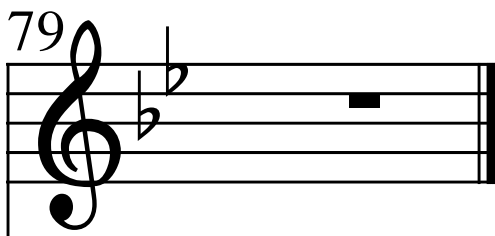
Bass

Musical staff for Bass voice part. The staff is in bass clef with a key signature of two flats. The melody consists of quarter and eighth notes. The lyrics are: tu- te be- le Val- ca- mo-ni- ca del mio cuor\

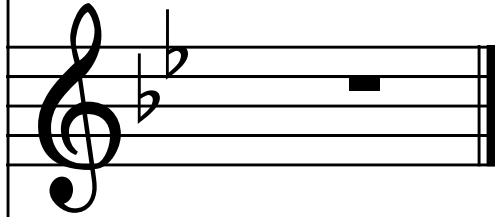
tu- te be- le Val- ca- mo-ni- ca del mio cuor\

**Soprano**

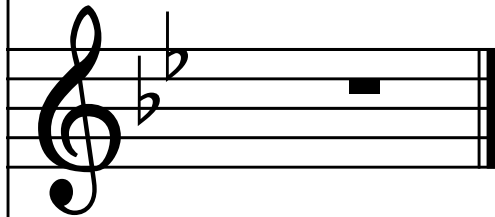
79



**Alto**



**Tenor**



**Bass**

